

# scotframe

timber frame |  SupaWall<sup>™</sup>

## Future Proof **YOUR** New Home with the Next Generation of Timber Frame Technology

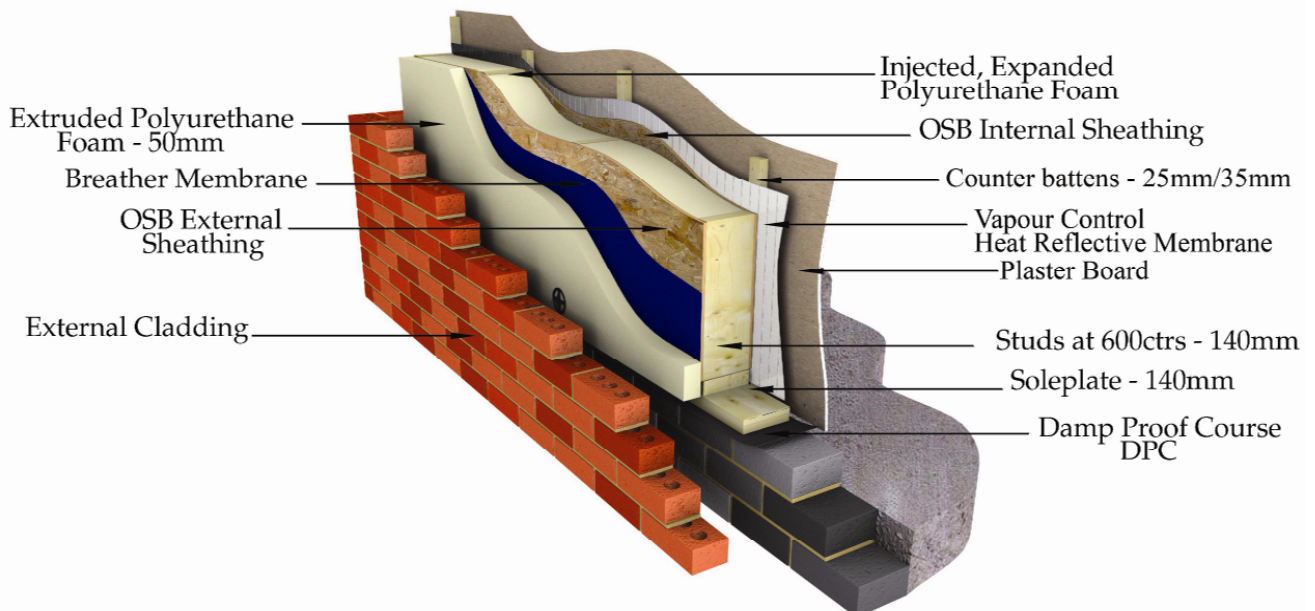
Scotframe are the first Scottish licensee to manufacture a new and highly innovative closed panel timber frame system, which will substantially reduce energy costs in self build homes for the future.

AND....with further targets for the reduction of CO<sub>2</sub> emissions and the improved thermal performance of new homes signposted for 2010, 2013 & 2016 **SupaWall<sup>®</sup>** offers the only realistic solution as it not only meets but comfortably surpasses these forthcoming regulations right now.

**SupaWall<sup>®</sup>** allows closed timber frame panels to be factory injected with a high performance polyurethane insulating material\* which fills every void in the panel, making it exceptionally thermally efficient and virtually airtight. This system is also available to complete the entire building envelope as **SupaFloor<sup>®</sup>** and **SupaRoof<sup>®</sup>**

**SupaWall<sup>®</sup>** achieves extremely low U values and will allow discerning self-builders like you the unique opportunity right now, to future proof the energy performance and thermal efficiency of your new home.

\*Polyurethane carries the BRE Green Guide "A" Rating (ODP of zero and GWP of one)



**CONTACT YOUR NEAREST  
SCOTFRAME OFFICE TODAY  
TO FIND OUT MORE AND GET  
A QUOTE FOR SUPAWALL**

## SupaWall® Features

As SupaWall® is so efficient, it can, in some circumstances, negate the need for a traditional central heating system, requiring heating only at entry/exit points, large areas of glazing and to bathrooms/shower rooms. We would recommend you speak to your architect and central heating engineer/specialist at an early stage of your project to ascertain your individual requirements.

SupaWall® uses a patented interlocking system that gives the building incredible strength, reduces air infiltration and makes erection quick and simple.

The system can be used with any form of interior and exterior cladding, making it very flexible in terms of architecture, design and usage.

SupaWall® represents a major step forward and will further assist in the creation of sustainable zero carbon emission homes with minimum reliance on diminishing and expensive non-renewable resources.

## Advantages of SupaWall®

- ✓ Exceeds CO2 emissions targets for 2010, 2013 & 2016
- ✓ SupaWall® is BBA Certified (09/4659)
- ✓ Unequalled thermal performance & air tightness
- ✓ Reduces overall construction time
- ✓ NOT a SIP panel – a traditional timber frame
- ✓ U-values as low as 0.11 W/m<sup>2</sup>K
- ✓ Accepted by NHBC, RIBA & TRADA
- ✓ Central heating requirements may be reduced
- ✓ Excellent acoustic performance
- ✓ Not restrictive on building designs



**scotframe**  
timber frame | homes

[www.scotframe.co.uk](http://www.scotframe.co.uk)



**CONTACT YOUR NEAREST SCOTFRAME  
OFFICE TODAY TO FIND OUT MORE  
AND GET A QUOTE FOR SUPAWALL**

### *Inverurie*

Tel: 01467 624440 Fax: 01467 624255  
e-mail: [inverurie@scotframe.co.uk](mailto:inverurie@scotframe.co.uk)

### *Cumbernauld*

Tel: 01236 861200 Fax: 01236 861201  
e-mail: [cumbernauld@scotframe.co.uk](mailto:cumbernauld@scotframe.co.uk)

### *Dundee (regional sales office)*

Tel: 01382 561772 Fax: 01382 568182  
e-mail: [dundee@scotframe.co.uk](mailto:dundee@scotframe.co.uk)

### *Inverness (regional sales office)*

Tel: 01463 717328 Fax: 01463 717196  
e-mail: [inverness@scotframe.co.uk](mailto:inverness@scotframe.co.uk)